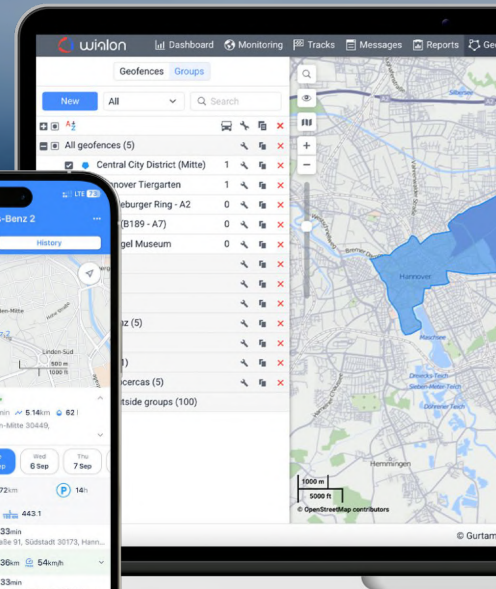
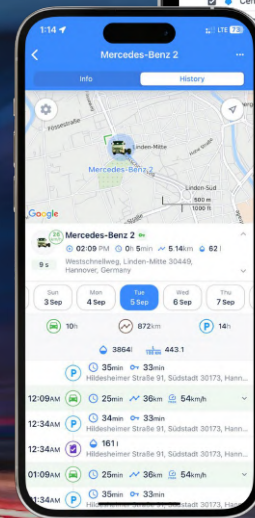


winalon

developed
by Gurtam



WHO WE ARE?

Gurtam is an international telematics company providing GPS tracking and IoT solutions for a wide range of industries. With headquarters in Vilnius, Lithuania, the company has offices in Boston, Dubai, and Tbilisi.



320+

dedicated
professionals



4

offices



150+

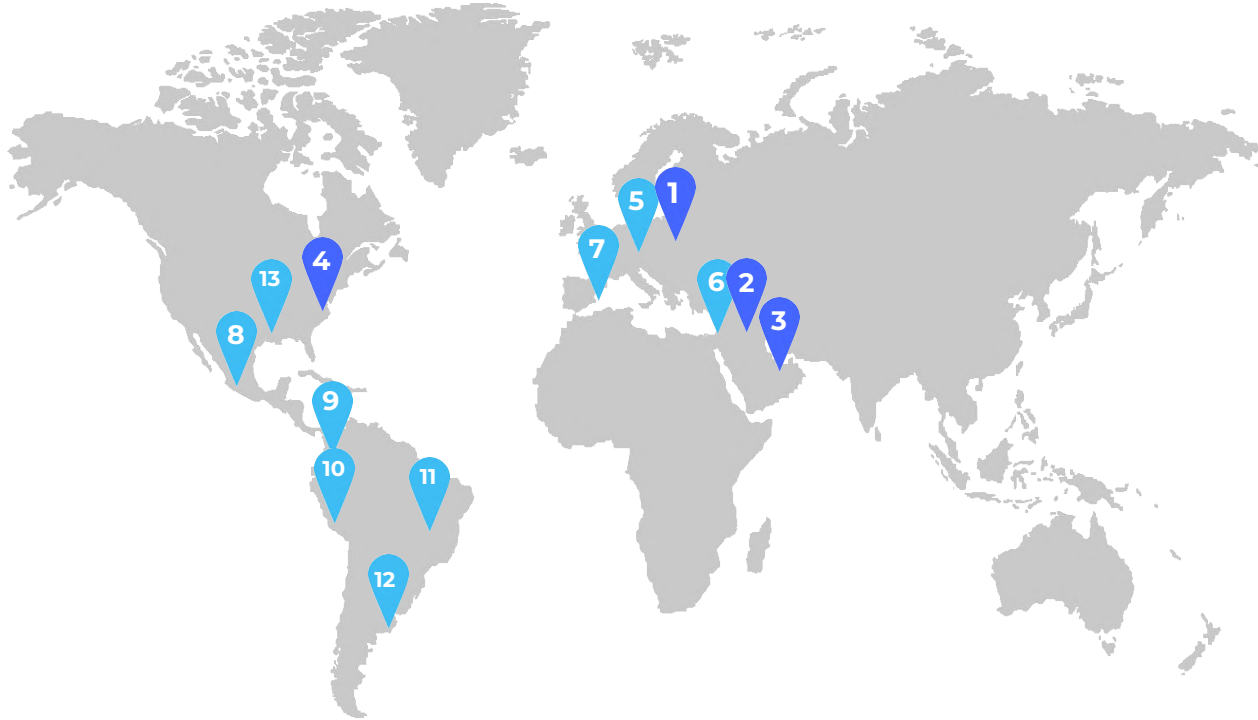
countries



3

products

GLOBAL PRESENCE



GURTAM OFFICES

- 1 LITHUANIA, VILNIUS (Headquarters)
- 2 GEORGIA, TBILISI
- 3 UAE, DUBAI
- 4 USA, BOSTON

MEET OUR TEAM GLOBALLY

- 5 POLAND (KRAKOW, WARSAW, WROCLAW)
- 6 GEORGIA, BATUMI
- 7 SPAIN, BARCELONA
- 8 MEXICO (MONTERREY, CHIHUAHUA)
- 9 COLOMBIA, MEDELLIN
- 10 PERU, LIMA
- 11 BRAZIL (LONDRINA, MARICÁ)
- 12 ARGENTINA, BUENOS AIRES
- 13 USA, DALLAS

GURTAM PRODUCTS



Wialon is an ultimate platform for GPS tracking and IoT. The platform is integrated with over 3,200 types of GPS devices and complies with the diverse needs of different industries.

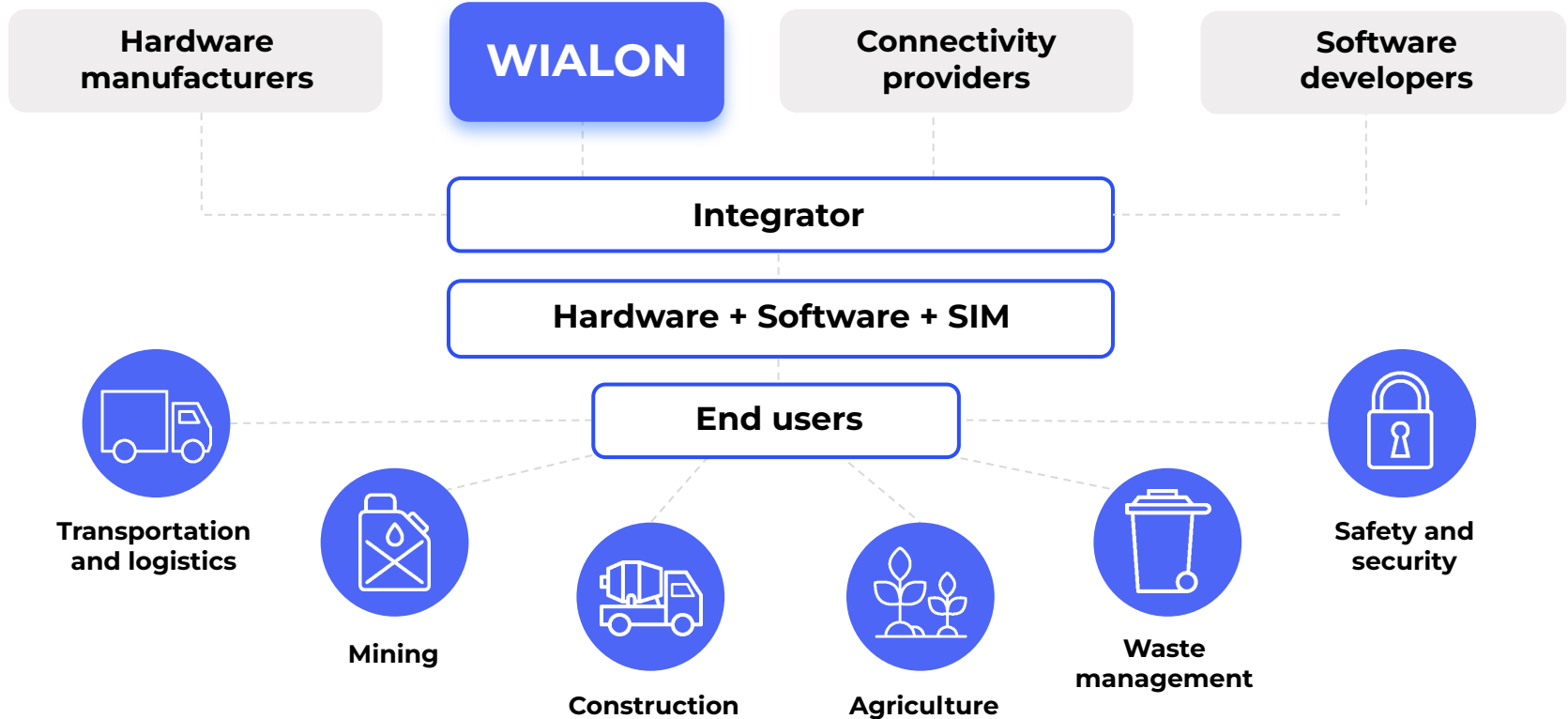


flespi is an innovative backend platform by Gurtam connecting telematics hardware of any type to various BI and telematics systems.



GPS-Trace is a set of easy-to-use GPS tracking apps for small business owners, resellers of GPS tracking services, car and pet owners.

WIALON COMMUNITY AND ECOSYSTEM



WIALON COMMUNITY

Gurtam has created a unique [telematics community](#). Its members are not just customers, but an integral part of the global Wialon family.

Our partners' growth and success is our priority.



WIALON COMMUNITY

To help our partners connect, grow their industry expertise and develop their business, Wialon organizes the following events:

- [Partner conferences](#) held for the members of the Wialon community throughout the year on different continents
- [Wialon Top Partners ranking](#) honoring service providers who connected the biggest number of units over the last year in their regions
- [GPS Hardware Manufacturers Top 10](#), a ranking for hardware manufacturers who showed the fastest growth on Wialon in the past year
- [IoT zones](#), dedicated areas at the largest industry expos across the world for the Wialon community
- **Closed community chats** with quick access to all its members, as well as the Wialon team

WIALON TODAY



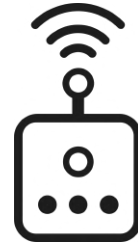
21

years in the
international
market



3,800,000+

vehicles connected
worldwide



3,300+

models of **GPS**
devices supported

WIALON HOSTING

**RELIABLE AND
HIGHLY SCALABLE
SOLUTION**

SLA

guaranteed uptime

1,250,000+

vehicles concurrently
online

99,000+

users concurrently
online

4,250,000+

messages per minute

WIALON BENEFITS

- Cloud and server-based solutions
- Wialon mobile app
- 24/7 technical support
- Training and certification
- [Open API/SDK](#)
- White labeling



WIALON KEY FEATURES

- Real-time tracking
- Comprehensive dashboard
- Advanced reports
- Geofencing
- Notification and alert system
- Video telematics tools
- Route optimization
- Sensor data reading
- Fuel management
- Driver behavior monitoring



INDUSTRY-SPECIFIC FUNCTIONALITY



Smart farming

Control field works, special equipment, and drivers.



Fleet maintenance control

Plan, control, and record maintenance costs.



Local delivery management

Arrange transportation, optimize delivery routes, and reduce costs.



Public transport control

Manage schedules, optimize routes and vehicle distribution, and track route performance.



Tracking field workers

Track mobile workforce, update tasks remotely, and control their fulfillment.



Leased vehicle tracking

Monitor and manage the fleet, and use special tools to prevent auto theft and facilitate repossession.

CUSTOMER SERVICE CENTER

- **Partner Growth team:** helps partners enhance their business and technical expertise
- **Technical Care team:** provides 24/7 technical support and speaks five languages – English, Spanish, Portuguese, French, Russian
- **Project Implementation team:** assists partners with bringing their projects to fruition
- **Quality Control and Training team:** collects and analyzes partners' feedback on the work of the customer service center, trains Wialon employees



WIALON TRAINING AND CERTIFICATION SYSTEM

- Web portal
training.gurtam.com
- Group and individual training
- Certification
- YouTube channel with training
videos



OUR END-USERS

Wialon partners work with hundreds of clients all over the world. They include both aspiring startups and Fortune 500 companies.

Papa John's, DHL, Shell, and **10,000+** other brands use Wialon to make their businesses smarter.



SDK DEVELOPMENTS AND API INTEGRATIONS

Explore dozens of Wialon-based solutions and integrations in [our marketplace](#).



SOLUÇÃO EM CONCRETO



CONNECT WITH US

Choose your best way to find any information you need for effective work with Wialon.



forum.wialon.com

Wialon forum



expo.wialon.com

Wialon IoT zones and conferences



wialon.com

Company's website



Partner chats

WhatsApp, Telegram



my.wialon.com

Partner's personal account



Newsletters

Product updates, monthly digests,
invitations

CONTACTS



[Facebook](#)



[Instagram](#)



[YouTube](#)



[LinkedIn](#)



sales@wialon.com

